

LASER TRIGGER MANUAL

1. Your Laser Trigger comes with a camera trigger cord. If you want the Laser Trigger to activate an Off Camera Flash, the following directions show how to set up an Off Camera Flash Sync Cord. Prepare your Flash cord by slipping the black plastic strain relief onto your cable first. Strip the cable jacket 3/8" (FIG.A), be careful not to nick the jackets of the two wires. Strip the red and black wire jackets 1/8" as shown in FIG.B. Terminate the two wires to the supplied Power Connector (FIG.C), red wire (positive) solders to the center connector terminal, black (negative) solders to the outside terminal. Slide the Black plastic strain relief over the soldered wires and thread it onto the Barrel Power Connector (FIG.D). Your Flash Cord is now ready to use.

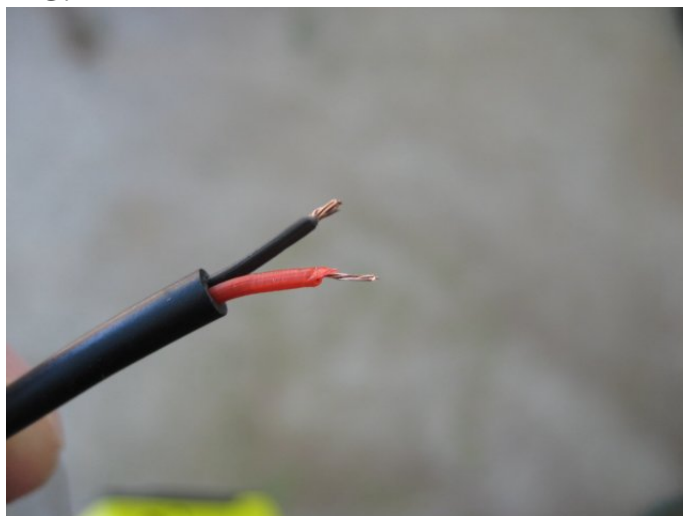




FIG.C

FIG.D



2.. To remove and replace the 12V battery, remove the Phillips Head Screw (Fig.E) and lift the top cover from the trigger. Using your fingernail or small screwdriver remove the battery starting at the positive end as shown in FIG.F.

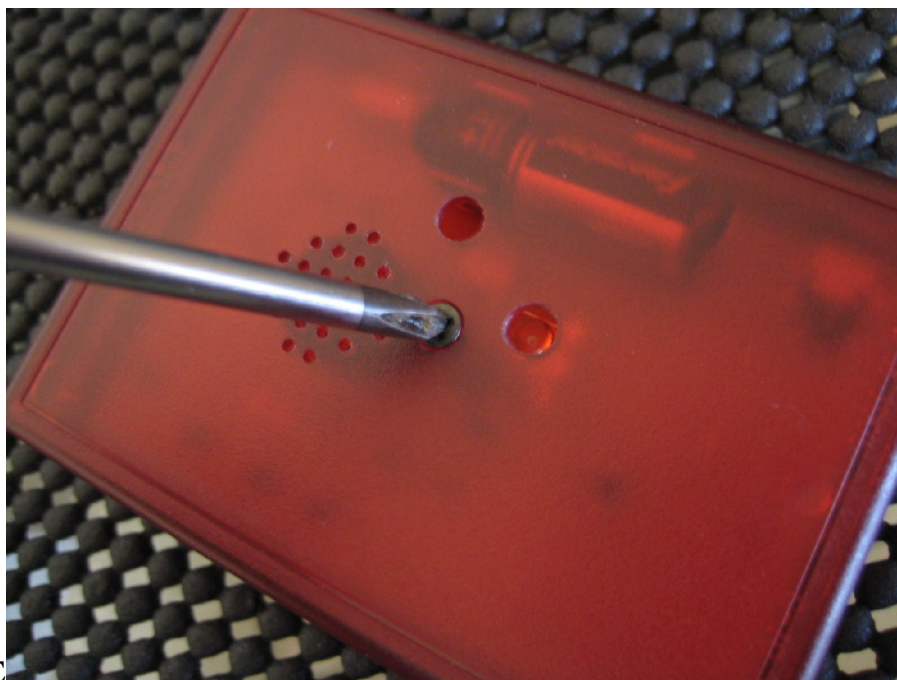


FIG.E

FIG.F



3. To turn the Laser Trigger on, slide the switch using a pen tip (FIG.G). The Red LED will light indicating the trigger is powered on and the buzzer will sound indicating the Laser Beam is broken or not recognized. If the LED doesn't light, check that the battery is properly seated in the holder and be sure the battery isn't dead. Your trigger is shipped with a new battery.

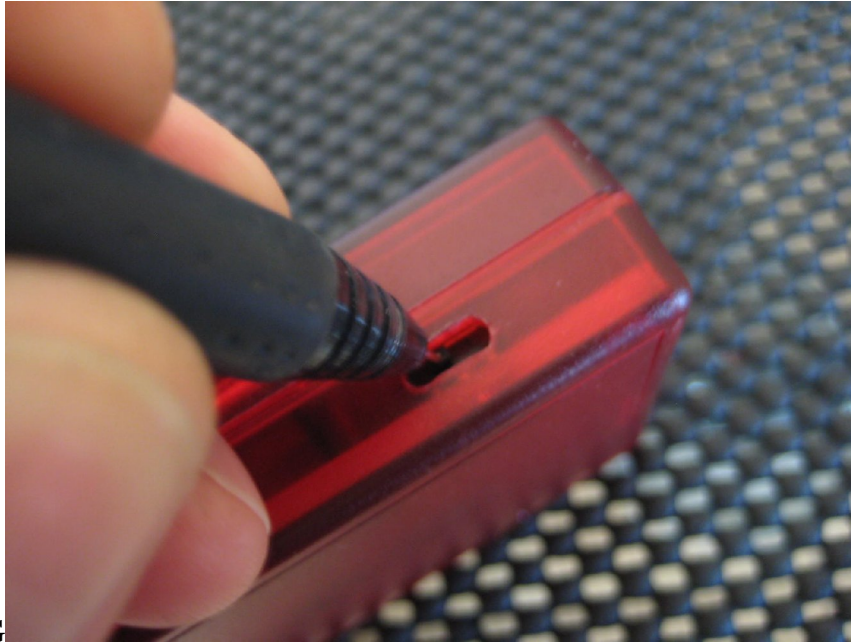
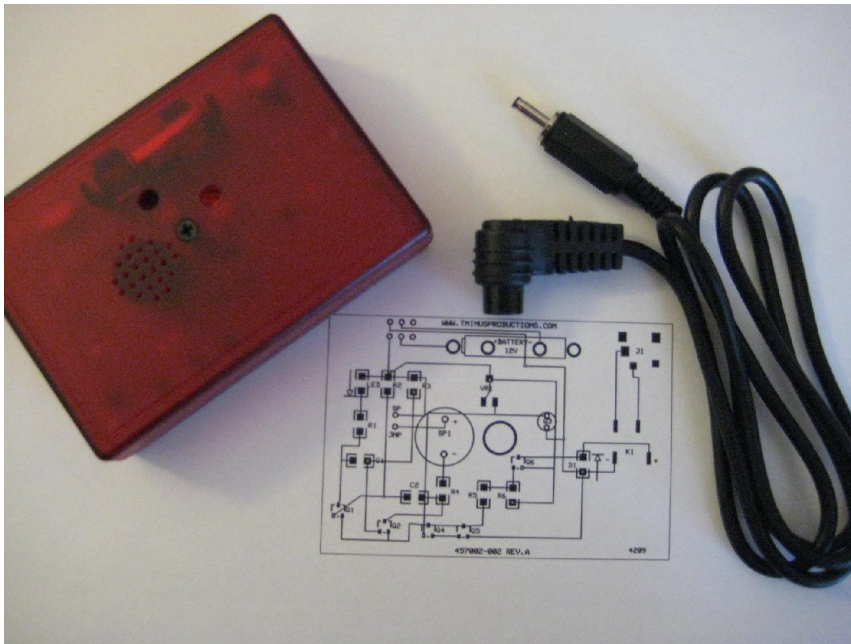


FIG.G



- 4. Your Laser Trigger has one port to aim a Laser Pointer at the sensor shown in Fig.H. It is extremely accurate (Target range approx. $\frac{1}{4}$ ") and requires you to mount the Trigger in one fixed position and the Laser Pointer fixed securely in another.**

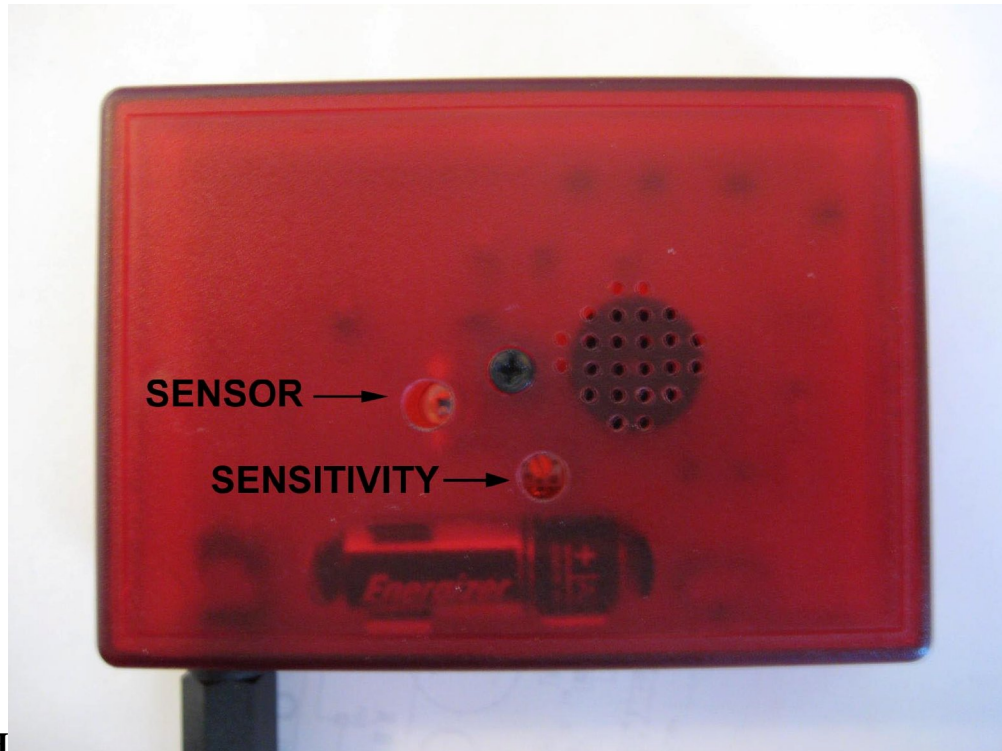


FIG.H

5. To adjust the sensitivity there is a single turn potentiometer with an adjustment access hole on the top of the trigger, FIG.H. Your trigger is assembled, tested and shipped with the sensitivity set to the most sensitive. To make the trigger less sensitive, use a small micro screwdriver and slowly turn the potentiometer clockwise. DO NOT try to turn it beyond one turn or you may damage and break the trigger.
6. If you wish to deactivate the audible buzzer, it will save battery use. To do so open the unit and locate the jumper located beside the black buzzer as show in FIG.I Remove the jumper (FIG.J), and replace it in the position shown in FIG.K.

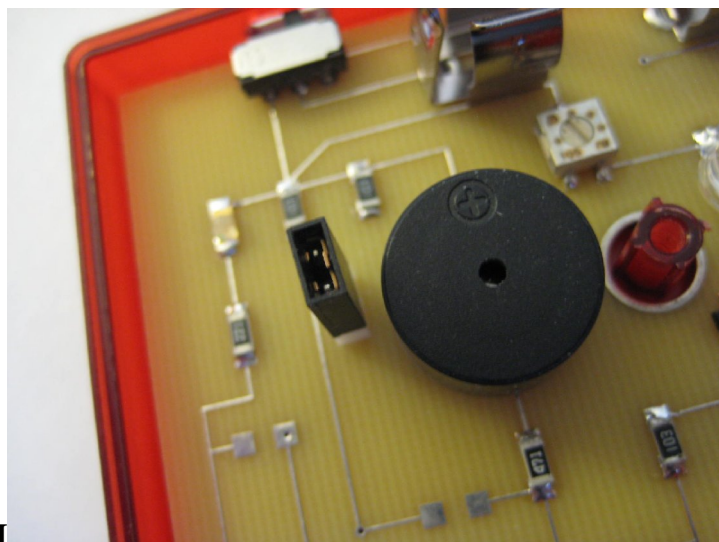


FIG.I

FIG.J

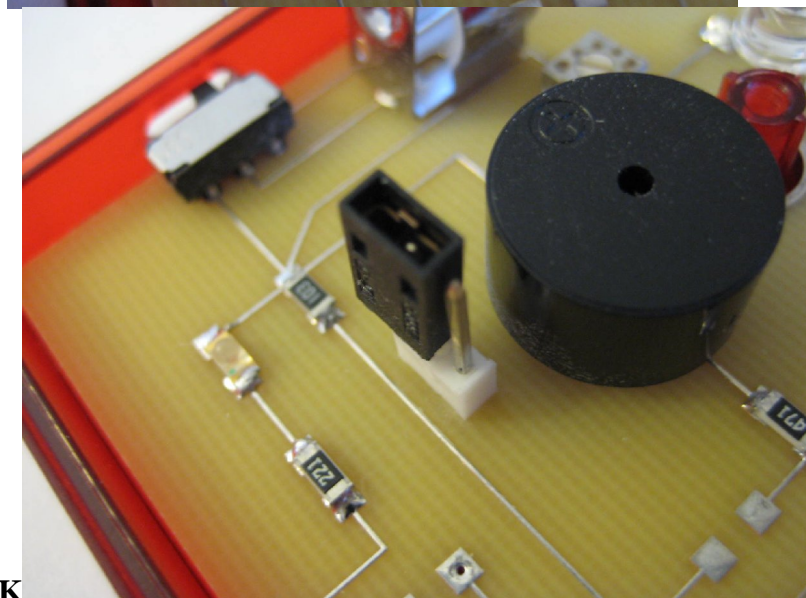
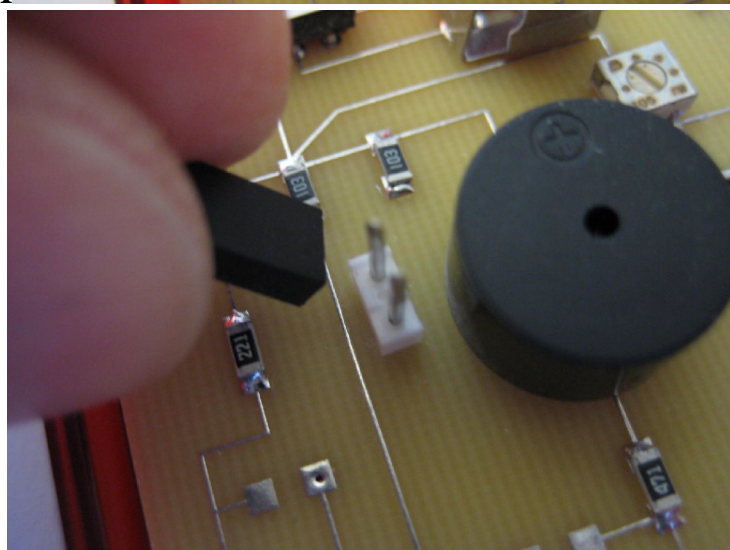


FIG.K

Thank you for your purchase and enjoy the trigger. Please feel free to email with any questions and we'd enjoy seeing your results so please share your photos with us and remember the positive feedback if you purchased the trigger on eBay.

Cheers,

Thom J. Rogers, President / CEO T-Minus Productions, Inc.